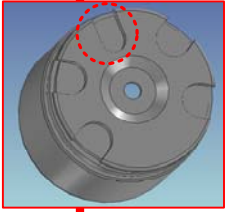


 <b>WORK INSTRUCTION</b>	<b>PARKING BRAKE CALIPER ADJUSTMENT</b>		Docu. #	Rev
			<b>WI-0041</b>	<b>A</b>
<b>CH 3</b>	Description	Date: 10/6/11		
Page 1	<b>FIELD ADJUSTMENT</b>	Checked: D.S. Author: F.W.		

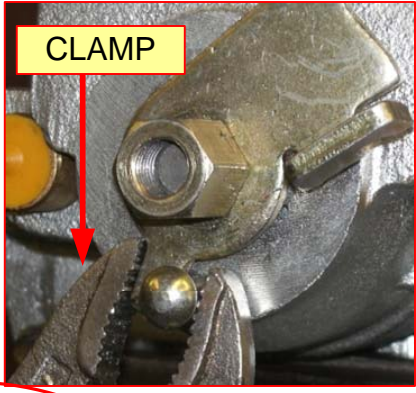
**CHECK PADS**

\* THE PAD DIMPLE MUST DROP IN PISTON SLOT AND PAD FLUSH WITH PISTON SURFACE.  
**(SAND DIMPLE TO FIT SLOT IF NEED.)**



**REMOVE LEVER PLATE**

\* REMOVE SPRING.  
\* CLAMP THE END OF LEVER PLATE TO FIX PIN.  
\* REMOVE SPINDLE NUT.  
\* REMOVE LEVER PLATE, RUBBER & PLATIC SEAL.

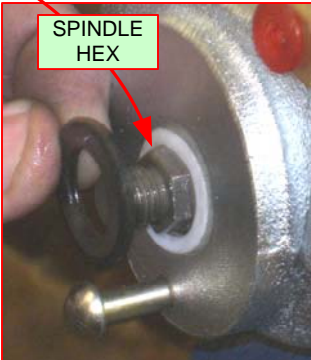


**ADJUST PADS DISTANCE**

\* TURN SPINDLE HEX TO PUSH PISTON OUT AGAINST ROTOR.

**INSTALL LEVER PLATE**

\* INSTALL PLASTIC SEAL (WHITE), RUBBER SEAL (BLACK), AND LEVER PLATE.  
\* HAND TIGHTEN SPINDLE NUT. (THE LOCKING END OF NUT SHOULD BE TOWARD CALIPER)  
\* CLAMP LEVER PLATE END TO FIX PIN.  
\* WRENCH TIGHTEN SPINDLE NUT SUCH THAT LEVER HAS NO "END-PLAY" AND LEVER ROTATES FREELY.



**TEST PARKING & BRAKE**

\* MOUNT ONTO ROTOR.  
\* **TEST PARKING:** DEPRESS LEVER, ROTOR MUST STOP SPINNING. IF NOT, CHANGE CALIPER. LEVER PLATE DOWN TO **-30° MAX.**  
\* **TEST BRAKE:** AIR CHECK THROUGH BANJO FITTING. ROTOR MUST STOP SPINNING.

**INSTALL SPRING**

